



" Devoted to making a safe and comfortable environment. "

Since its establishment in 2009, Qingdao Kingstone Industry Co., Ltd. has been dedicated to the R&D, production, and sales of safety products, construction materials, and various types of mats.

20000<sup>m</sup>  
Production Area

15 Years  
Export Experience

58  
Countries Exported To

40<sup>t</sup>  
Daily Output

Kingstone has 15 years of experience in supplying deck mats and has undertaken new ship projects for clients such as HMM, CMA, MAERSK, YANGMING, and EVER GREEN. We also offer products of different grades, which can meet customers' special requirements for products in terms of flame retardancy, aging resistance, insulation, etc. Kingstone provides a wide variety of product styles, with a daily output of up to 2,000 square meters. And keep stocks of regular products to meet the needs of various customers.

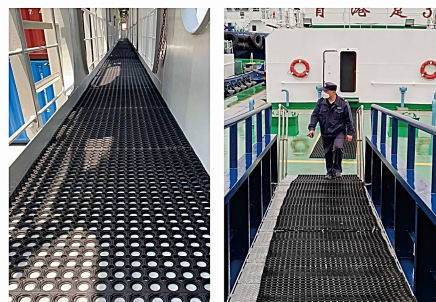
1



## KM106

IMPA 511071

### PEFORATED RUBBER MAT



Item No.	Dimensions
KM106-1	1000x1500x22mm
KM106-5	1000x1500x16mm
KM106-8	1000x1000x16mm
KM106-9	1000x1000x15mm

## KM111

Roll Mat

### PEFORATED RUBBER FLOOR-UTE

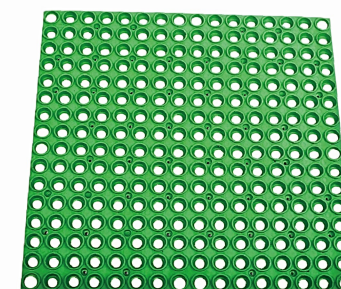


Item No.	Dimensions
KM111	Width up to 1.8m Thickness 10mm Customized Length

3

## KM107

### KING MAT-DECK



Item No.	Dimensions
KM107	500x500x15mm